



Hassle-Free Shade *On-Demand*®

PO Box 51294, Philadelphia, PA 19115 • Phone: 877.333.8323 • www.sureshade.com

Technical Specifications for the SureShade Automated Tele-Frame (ATF) System

The SureShade® automated tele-frame shade system is an automated, self-supporting retractable canvas boat top driven by telescopic linear actuators that automatically extend and retract at the touch of a button. This design is suitable for any boat or yacht with an overhead structure to which the shade can be mounted or within which it can be integrated, such as a hardtop, bridge, tower or T-top. This product is particularly ideal for the offshore sportfishing boat market because there are virtually no shade products that adequately protect anglers from the elements without interfering with the sport. The fact this top is completely self-supported with no need for supporting side poles allows for unobstructed views from the boat, providing clearance for boating activities such as fishing, boarding, disembarking, and docking.



Product Features:

- Automated extension and retraction of shade
- Self-supported
- Various spring tension roller types (straight / proprietary arched) allow for hands-free roll-up.
- Independently tested and can withstand winds of 50+ mph, can hold 300 lbs across the stainless steel framework of the top.

**Product Benefits:**

- Hassle-free, quick shade deployment and retraction allows boaters to enjoy immediate protection of shade or warmth of the sun at any time.
- Boaters can enjoy unobstructed views from the boat and have sufficient clearance for boating activities such as fishing, boarding, disembarking, and docking.
- Fisherman can now enjoy shade where they couldn't before because it would interfere with their sport.
- The arched roller allows for rain run-off and fits nicely along boat contours which contributes to the boat's aesthetics and adds value to the boat's design.
- Product can be seamlessly integrated within the hardtop of a boat allowing shade to serve as a natural extension of the boat.
- Sturdy and robust design enables the top to be fully extended while underway, so the boater or fisherman doesn't have the added task of folding up the shade before taking a cruise or heading to the high seas for fish.

There are two versions of the Automated Tele-Frame (ATF) design: 2-Stage and 3-Stage. The primary difference between the two versions is the number of telescoping tubes (2 vs. 3), which results in different extension lengths. The 2-Stage design has a maximum extension length of 7 feet, and the 3-Stage design has a maximum extension length of 10 feet.

SureShade[®] works closely with boatbuilders to identify applications for which the SureShade would be suitable, and then collaborates with them to design, test, certify and produce a SureShade model so the boatbuilder can offer it as either a standard or option for that particular model.

Our mission is to supply the marine market with innovate shade systems that will facilitate and enhance the boating experience. Our vision is to become the new shade standard for boats.

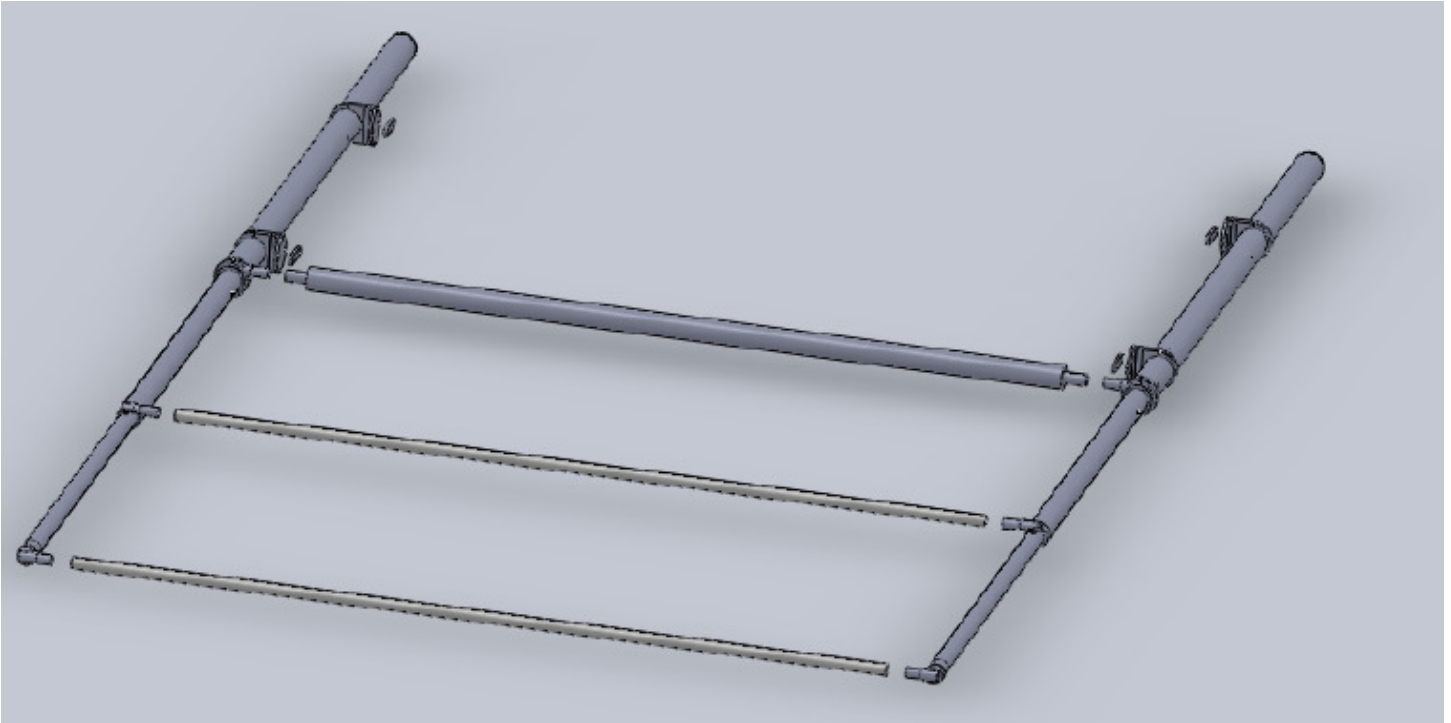
For further technical details, please contact Ron Russikoff at 267-968-7533 or toll-free at 877-333-8323.



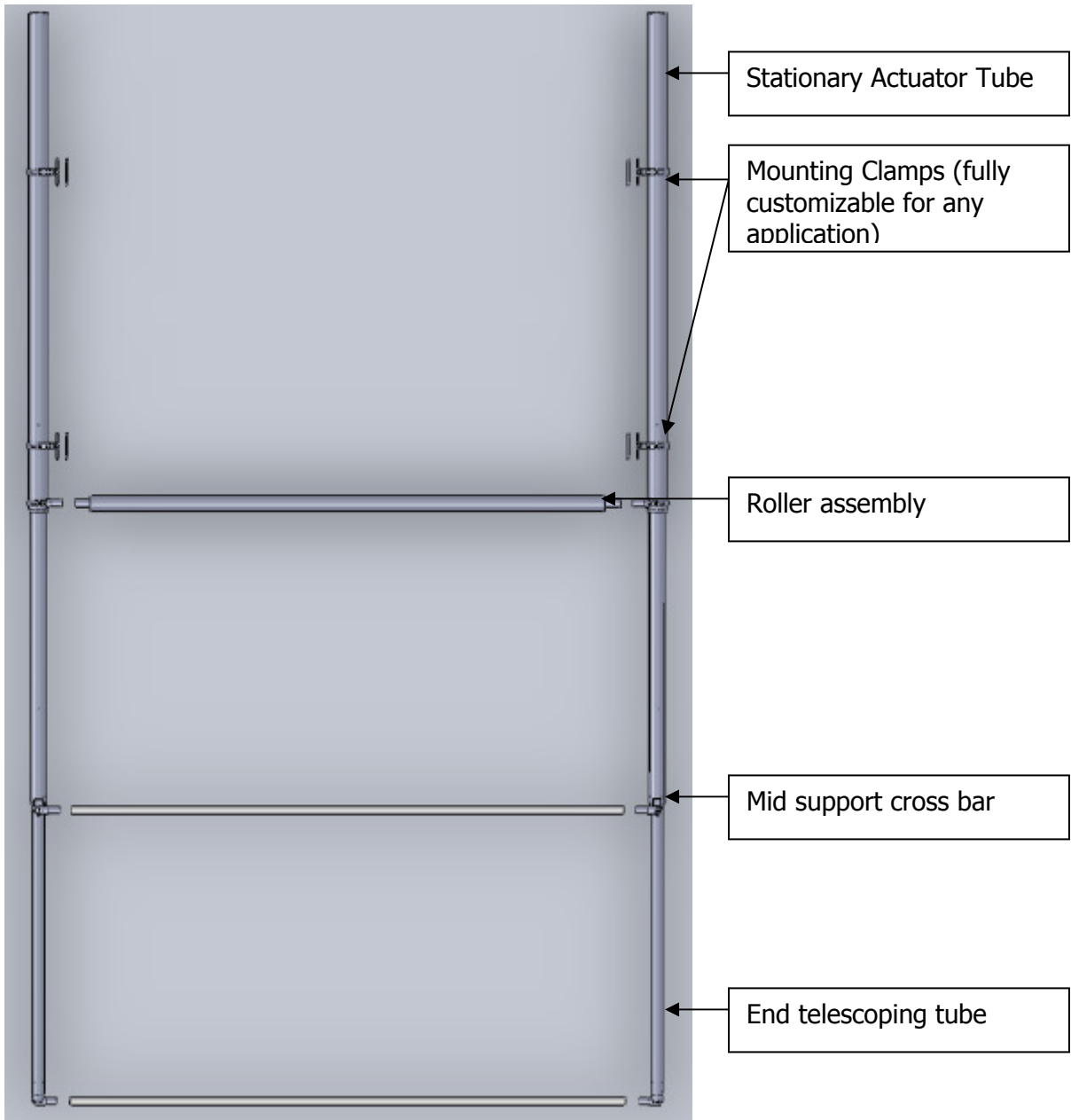
	ATF 2-STAGE	ATF 3-STAGE
Functional Specification		
Extension length	6' or 7'	10'
Width	Up to 12'	Up to 12' standard Over 12' custom
Hardware Specification		
Actuator Material	316SS	316SS
Framework Material	316SS	316SS
Mounting Component Material	316SS	316SS
Actuator Placement	Integrated w/in bridge or hardtop Top surface-mount Underside surface-mount	Integrated w/in bridge or hardtop
Roller Configuration	Straight or cambered spring-tension roller	Straight or cambered spring-tension roller up to 12' width Over 12' width custom
Roller Position	Traveling or stationary	Stationary
Canvas	Marine-grade acrylic, any color	Marine-grade acrylic, any color
Electrical Specification		
Voltage	12v or 24v	12v or 24v
Amperage	6-7 amps	14-17 amps
Operating Device	Toggle switch and remote control	Toggle switch and remote control
Controller Type	Software-based synchronization	Software-based synchronization
Controller Dimensions	5" x 7" x 1.5"	5" x 7" x 1.5"
Structural Specification:		
Maximum wind speed:	55mph	45 mph
Maximum weight displacement	300 lbs across framework	280 lbs across framework
Deflection	Less than 3"	Less than 6"



ATF 2-Stage Drawings

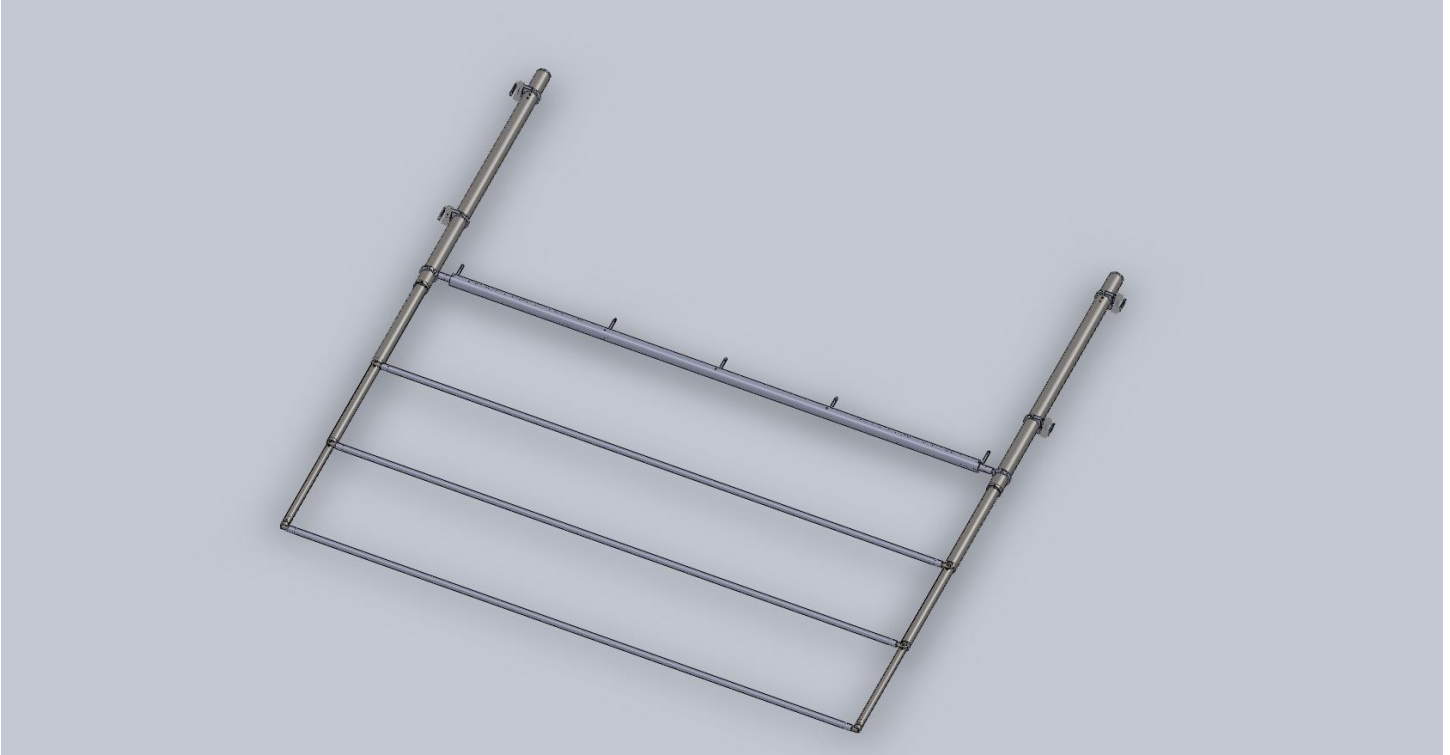


The SureShade® System is comprised of a stationary actuator tube, with two (2) telescoping tubes driven by lead screws. Supporting mid-crossbar keeps the canvas from sagging. The tubes are driven by synchronized electric motors, and can be operated at the helm or by remote control. This is a 2-stage system, with 2 telescoping tubes for a max extension length of 7ft.





ATF 3-Stage Drawings



Our 3-stage system, with 3 telescoping tubes can extend up to 10 feet. Canvas is rolled up automatically with a torsion spring roller. Components are similar to the 2-stage system, with an additional telescoping tube and mid support crossbar.